

ERBESSD INSTRUMENTS®

PHANTOM

IR Temperature Sensor

PHANTOM, the best wireless condition monitoring system worldwide with **the best battery in the market.**



With the infrared temperature sensor you can collect data from your machines with an incredible precision.

The signal from the Phantom sensors is encrypted which ensures the reliability of the information and the security of your data.

TECHNICAL SPECIFICATIONS

MEASUREMENT

Part Number:

EPH-T20

Sensor:

Infrared thermometer

Sensing Angle:

90°, for every 1cm you move away from an object, the sensing area grows by 2cm

Status:

Battery, temperature and RMS information

Data Receiving Interval:

5min / Not configurable

Internal Temperature
Accuracy:

±5°C

Temperature Range (object):

-70°C to +380°C

-94°F to +716°F

Temperature Range (enviroment):

-40°C to +125°C

-40°F to +257°F

POWER SUPPLY

Battery Lifetime:

100,000 measurements
Standby Mode if Gateway not detected

Main Power Supply:

Lithium battery "1/6D" 3.6V and 1.7A

CONNECTIVITY AND SOFTWARE

Wireless Protocol:

Bluetooth BLE 5.0 / Modbus via Gateway

Software Compatibility:

DigivibeMX version
Phantom / WISER Vibe
Firware Updates via Phantom Manager (iOS & Android)

Signal Strenght Range:

-90dBm to -30dBm

Power Output Range:

-4dBm a +8dBm
(Configurable)

Wireless Range:

100m line sight

Operating Frequency:

2.4GHz

DIMENSIONS

Dimensions:

48mm x 34mm

Weight:

177 gr

Material:

ABS / Stainless steel

Protection Rating:

Water and dust resistant (IP67)

Base Temperature Range:

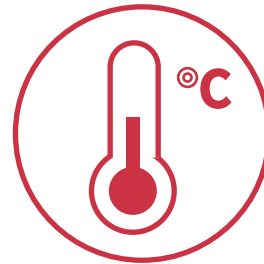
-40 to +80 °C

(-40 to +176 °F)

ACCESSORIES

The temperature Phantom has everything you need to start collecting data without the need of additional accessories.

Add it to your measurement point through DigivibeMX and you will be ready to monitor your machines.



Just worry about where to place the sensor. We have the magnetic base perfect for the job.

QUICK GUIDE



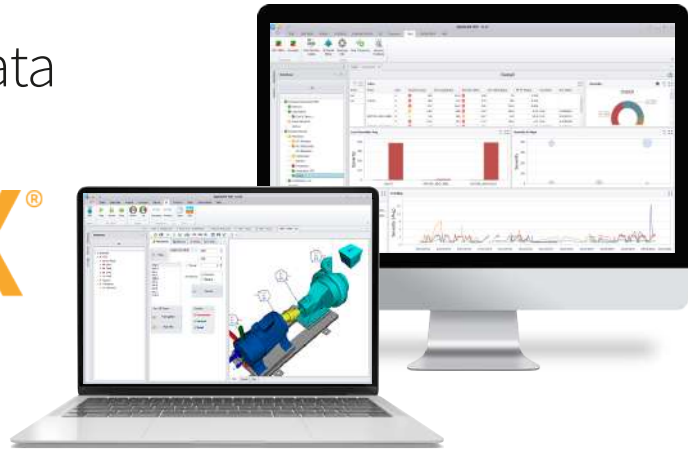
Just place the infrared sensor between 1cm to 10 cm of the sensing area and you are ready.

The sensing diameter starts at 2cm and grows 2cm for every 1cm you go farther from the object.

Just take in mind the length of the surface to measure so you receive the correct information from your Phantom sensor.

Analyze and visualize the data
of your sensors with

DigivibeMX®



Access to your information
in an easy way trough your
browser or DigivibeMX.

Phantom sensors are compatible with
communication protocol



MEET THE PHANTOM FAMILY

Phantom Expert & Phantom Gen 2

High Range triaxial vibration sensor. It is able to send 3 simultaneous FFT and time waveform recordings at once. Available in **High Sensitivity**, **Biaxial** and **ATEX**.



Phantom RPM

With the RPM sensor you can easily analyze the revolutions per minute of any rotor, turbine or vent with incredible precision with a switching speed of 600kRPM.



Phantom Current

The Phantom current module allows you to measure up to 4 amperage channels with clamps that start with 50 amp and go to 500 amp.



Phantom GP

General Purpose modules that are compatible with any kind of sensor to obtain wireless data. Available for **4-20mA**, **0-10V**, **Digital Signals** and **2.2Vpp** sensors.



Phantom All in One

Obtain the reliability of three sensors in only one Phantom module; vibration, temperature and current. Complete condition monitoring all in one.



Coming soon...

Phantom
Thermographic
Camera



ERBESSD INSTRUMENTS®

WORLDWIDE toll-free:

+1-877-223-4606

ENGLISH:

Sales, Service & Support Engineer

+1-518-874-2700

info@erbessdreliability.com

SPANISH & FRENCH:

Sales, Service & Support Engineer

+52 (55) 6280-7654

info@erbessd-instruments.com

BUY ONLINE

www.erbessd-instruments.com

ALL THE IMAGES ARE FOR ILLUSTRATIVE PURPOSES ONLY. THE FINAL PRODUCT MAY VARY DEPENDING ON THE VERSION AND/OR THE CHANGES OR UPGRADES MADE TO THE PARTS AND COMPONENTS OF THE DEVICES

© 2018 **ERBESSD INSTRUMENTS**

PI-DS2021.1020.14