

ERBESSD INSTRUMENTS®

PHANTOM

General Purpose Sensor

ERBESSD INSTRUMENTS® PHANTOM | GENERAL PURPOSE SENSOR

PHANTOM, the best wireless condition monitoring system worldwide.



The signal from the Phantom sensors is encrypted which ensures the reliability of the information and the security of your data.



With the General Purpose Phantom you can adapt the data collection to your specific needs. Take **any 0-10V sensor** and make it wireless.



TECHNICAL SPECIFICATIONS

MEASUREMENT

Part Number:

EPH-G63

Input Range:

0-10 VDC

Inputs:

4 channels

Status:

Battery, internal temperature and voltage value

Data Receiving Interval:

Every 5 min

Internal Temperature Accuracy:

±5°C

POWER SUPPLY

Battery Lifetime:

2-3 years*

Standby Mode if Gateway not detected

Main Power Supply:

2 AAA 1.5V Batteries (Replaceable)

CONNECTIVITY AND SOFTWARE

Wireless Protocol:

Bluetooth BLE 5.0 / Modbus via Gateway

Signal Strength Range:

-90dBm to -30dBm

Power Output Range:

-4dBm to +8dBm
(Configurable)

Software Compatibility:

DigivibeMX version
Phantom / WiSER Vibe
Firmware Updates via Phantom
Manager (iOS & Android)

Wireless Range:

100m line sight

Operating Frequency:

2.4GHz

DIMENSIONS

Dimensions:

100mm x 77mm x 26mm

Weight:

138 g

Base Temperature Range:

-40 to +80 °C
(-40 to +176 °F)

Material:

Nylamid / Aluminum

Protection Rating:

Water and dust resistant (IP67)

*Depending on user's configuration

ACCESSORIES

The General Purpose wireless sensors are able to monitor virtually **any type of signal** and is compatible with other kind of sensors.

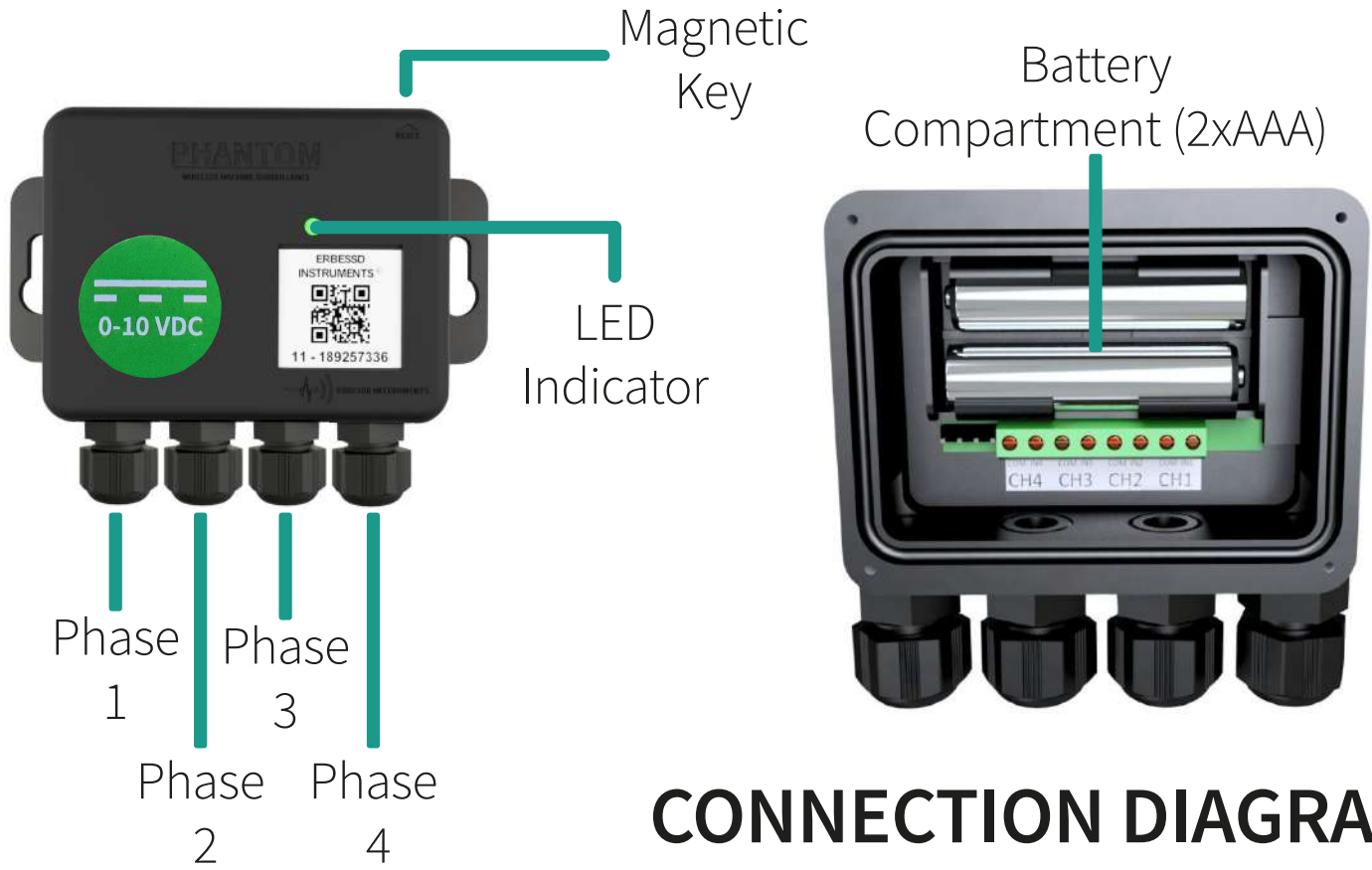


Any sensor with a **0-10V** output range is compatible with the General Purpose Phantom sensor.

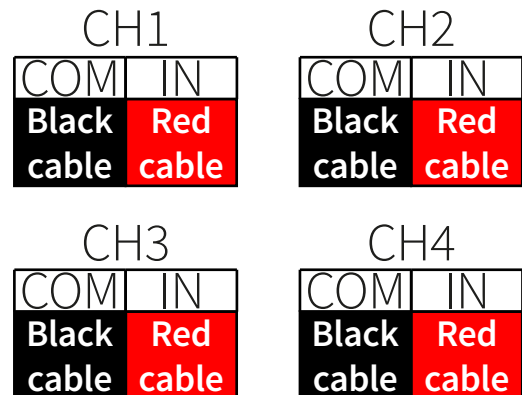
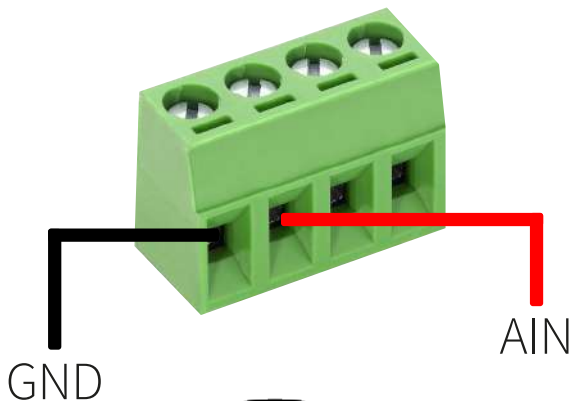
Just define a range for the volts received by the module and create your own parameters.

Place your sensor's cables easily with the help of a screwdriver

QUICK GUIDE

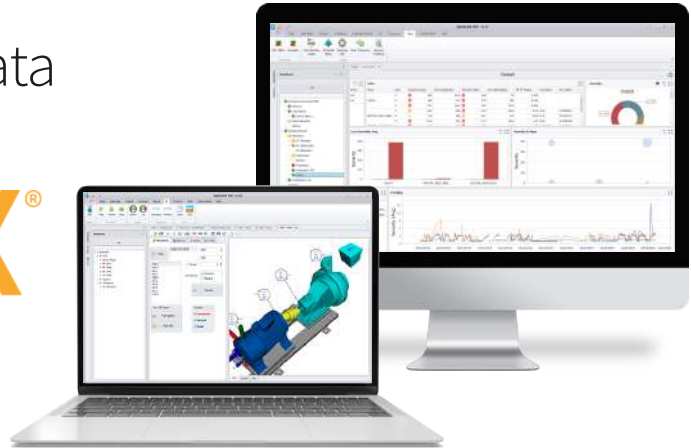


CONNECTION DIAGRAM



Analyze and visualize the data
of your sensors with

DigivibeMX®



Access to your information
in an easy way trough your
browser or DigivibeMX.

Phantom sensors are compatible with
communication protocol



MEET THE PHANTOM FAMILY

Phantom Expert & Phantom Gen 2

High Range triaxial vibration sensor. It is able to send 3 simultaneous FFT and time waveform recordings at once. Available in **High Sensitivity**, **Biaxial** and **ATEX**.



Phantom Termocouple & Phantom Infrared

Have a better control of your machines' temperature. You can connect up to 3 thermocouple sensors or acquire the **infrared** temperature sensor so you can monitor with extreme precision.



Phantom RPM

With the RPM sensor you can easily analyze the revolutions per minute of any rotor, turbine or vent with incredible precision with a switching speed of 600kRPM.



Phantom Current

The Phantom current module allows you to measure up to 4 amperage channels with clamps that start with 50 amp and go to 500 amp.



Phantom All in One

Obtain the reliability of three sensors in only one Phantom module; vibration, temperature and current. Complete condition monitoring all in one.



Coming soon...

Phantom
Thermographic
Camera



ERBESSD INSTRUMENTS®

WORLDWIDE toll-free:

+1-877-223-4606

ENGLISH:

Sales, Service & Support Engineer

+1-518-874-2700

info@erbessdreliability.com

SPANISH & FRENCH:

Sales, Service & Support Engineer

+52 (55) 6280-7654

info@erbessd-instruments.com

BUY ONLINE

www.erbessd-instruments.com

ALL THE IMAGES ARE FOR ILLUSTRATIVE PURPOSES ONLY. THE FINAL PRODUCT MAY VARY DEPENDING ON THE VERSION AND/OR THE CHANGES OR UPGRADES MADE TO THE PARTS AND COMPONENTS OF THE DEVICES

© 2018 ERBESSD INSTRUMENTS

P0-DS2021.1020.14