

ERBESSD INSTRUMENTS®

EI WISER_{3X}
TRIAxIAL ACCELEROMETER

The new **WiSER 3X Mini**, the smallest 3-axis Wireless Accelerometer in the industry. Our sensor is capable to do off-route & on-route vibration analysis in **real time**.



Connects directly to your device via **Bluetooth** giving you full freedom and mobility to collect vibration data for basic analysis.



Collect data from your iOS device with WiSER VIBE!

TECHNICAL SPECIFICATIONS

You can find **WiSER 3X Mini** in it's **High Sensitivity** version (W3X-MLR) or in it's **High Range** version (W3X-MHR).

MEASUREMENT							HIGH SENSITIVITY
Part Number:	W3X-MLR	Sensor:					Dynamic Range:
		MEMS triaxial accelerometer					2G / 4G / 8G
Frequency Range:		Spectral Noise:					Data Receiving Interval:
4 kHz (x,y)		130 µg/√Hz					On Request
1.8 kHz (z)							Resolution Lines:
							6400
Recording Time (s) 3 axis:	1	2	4	8	16	Sensitivity:	
Recording Time (s) 1 axis:	3	6	12	24	48	100mV/G	
Sample Rate (Hz):	25600	12800	6400	3200	1600		
Max Frequency (Hz):	4000	2000	1000	500	250		

MEASUREMENT							HIGH RANGE
Part Number:	W3X-MHR	Sensor:					Dynamic Range:
		MEMS triaxial accelerometer					8G / 16G / 32G
Frequency Range:		Spectral Noise:					Data Receiving Interval:
10 kHz (x,y)		630 µg/√Hz					30min / Configurable
5.1 kHz (z)							Resolution Lines:
							6400
Recording Time (s) 3 axis:	1	2	4	8	16	Sensitivity:	
Recording Time (s) 1 axis:	3	6	12	24	48	100mV/G	
Sample Rate (Hz):	25600	12800	6400	3200	1600		
Max Frequency (Hz):	10000	5000	2500	1250	625		

POWER SUPPLY

Battery Lifetime:

Up to 2 years* / Automatic sleep mode after 30min no use
(Standby mode 3uA current consumption)

Main Power Supply:

Lithium coin cell battery CR2032
3V/235mAh (Replaceable)

CONNECTIVITY AND SOFTWARE

Wireless Protocol:

Bluetooth BLE 5.0

**Signal Strenght
Range:**

-90dBm to -30dBm

Power Output Range:

+8dBm

Software Compatibility:

WiSER Vibe (iOS)
Firware Updates via Phantom
Manager (iOS & Android)

Wireless Range:

50m line sight

Operating Frequency:

2.4GHz

DIMENSIONS

Dimensions:

37.7mm x 33.7mm

Weight:

100 gr

**Base Temperature
Range:**

-40 to +80 °C
(-40 to +176 °F)

Material:

ABS / Stainless Steel

Protection Rating:

Water and dust resistant (IP67)



Choose the best option
according to your needs.



*Determined by user´s configuration

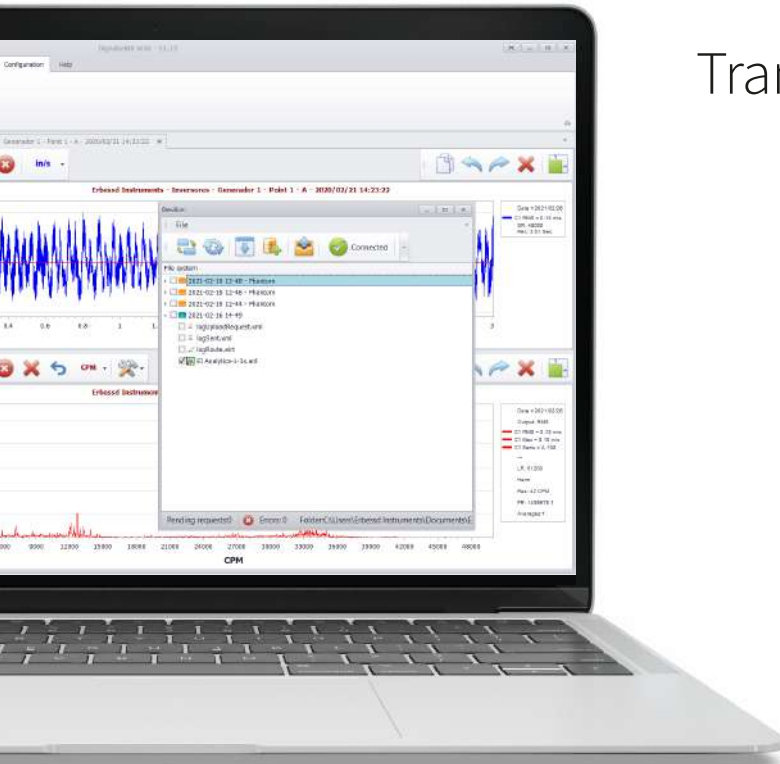
Analyze your machines quick & easy!

Place the **WiSER 3X Mini** on your machine

Open **WiSER VIBE** and connect to your sensor

Record and **save** your information in the app

Transfer your files to **DigivibeMX 11**



Export and import your information with the DigivibeMX feature that links your iOS device to your computer



Analyze and visualize the data of your WiSER 3X mini with **DigivibeMX®**



Access to your information in an easy way trough your browser or DigivibeMX.

MEET THE WiSER FAMILY

EI WiSER 3X

Triaxial wireless vibration sensor with rechargeable battery. Perfect for vibration analysis and balancing on site. Compatible with iOS apps and DigivibeMX.



EI WiSER

One axis wireless vibration sensor with rechargeable battery. Connect your USB receiver and you're ready to go. Compatible with iOS apps and DigivibeMX.



The EI WiSER and EI WiSER 3X can easily and reliably connect to most 3rd party vibration and balancing instruments using the optional **WiSER Universal Receiver**.

ERBESSD INSTRUMENTS®

WORLDWIDE toll-free:
+1-877-223-4606

ENGLISH:
Sales, Service & Support Engineer
+1-518-874-2700
info@erbessdreliability.com

SPANISH & FRENCH:
Sales, Service & Support Engineer
+52 (55) 6280-7654
info@erbessd-instruments.com

BUY ONLINE
www.erbessd-instruments.com

ALL THE IMAGES ARE FOR ILLUSTRATIVE PURPOSES ONLY. THE FINAL PRODUCT MAY VARY DEPENDING ON THE VERSION AND/OR THE CHANGES OR UPGRADES MADE TO THE PARTS AND COMPONENTS OF THE DEVICES

© 2018 ERBESSD INSTRUMENTS

WM-DS2021.0720.09