

ERBESSD INSTRUMENTS®

PHANTOM

Thermographic Camera

PHANTOM, the best wireless continuous monitoring system worldwide.



The signal from the Phantom sensors is encrypted which ensures the reliability of the information and the security of your data.



With the Thermographic Camera you can accurately measure the temperature of surfaces within 1 meter distance.



TECHNICAL SPECIFICATIONS

MEASUREMENT

Part Number:
EPH-T70

IR Resolution:
32 x 24 pixels

Max Distance to Object:
up to 1m

Frames to Capture:
1 to 16 frames

Field of View:
110° x 75°

Target Temperature:
-40 to +300 °C
(-40 to +572 °F)

Capture Rate:
0.25 to 4 fps

Accuracy:
±1°C (±33.8°F)

Recording Interval:
5 to 720 min (Configurable)

POWER SUPPLY

Battery Lifetime:
1-2 years
Standby Mode if Gateway not detected

Main Power Supply:
2 AAA 1.5V Batteries (Replaceable)

CONNECTIVITY AND SOFTWARE

Wireless Protocol:
Bluetooth BLE 5.0 / Modbus via Gateway

Software Compatibility:
DigivibeMX version
Phantom / WiSER Vibe
Firmware Updates via Phantom
Manager (iOS & Android)

Wireless Range:
100m line sight

Operating Frequency:
2.4GHz

DIMENSIONS

Dimensions:
100mm x 77mm x 26mm

Weight:
140 gr

**Base Temperature
Range:**

Material:
Nylamid / Aluminum

Protection Rating:
Water and dust resistant (IP5X)

-40 to +75 °C
(-40 to +167 °F)

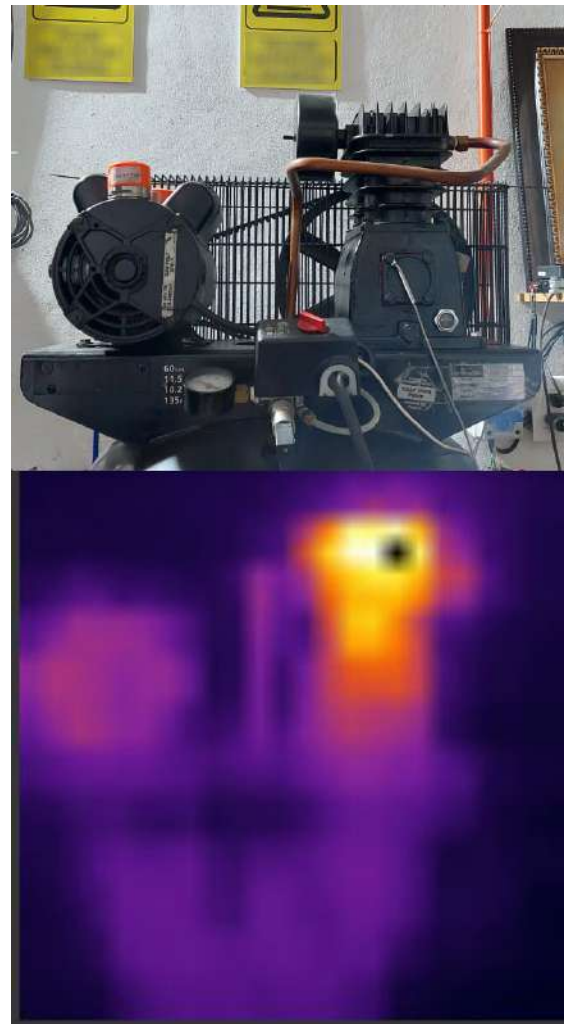
*Depending on user's configuration

ACCESSORIES

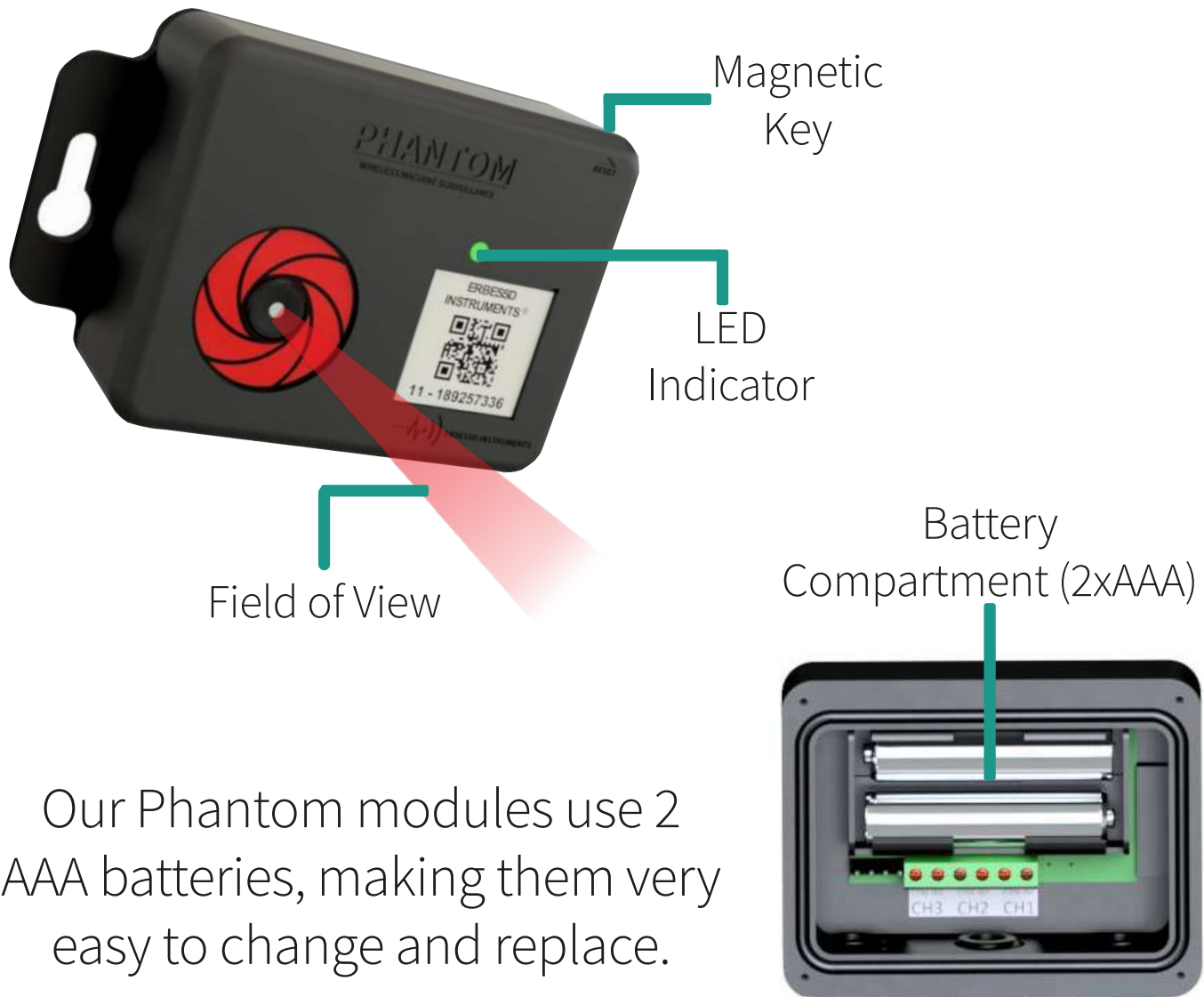
The Phantom thermographic camera has everything you need to start collecting data without the need of additional accessories.

Add it to your measurement point through DigivibeMX and you will be ready to monitor your machines.

Follow the steps on the Phantom Wizard and take a look at your measurements in the Extra Parameters.



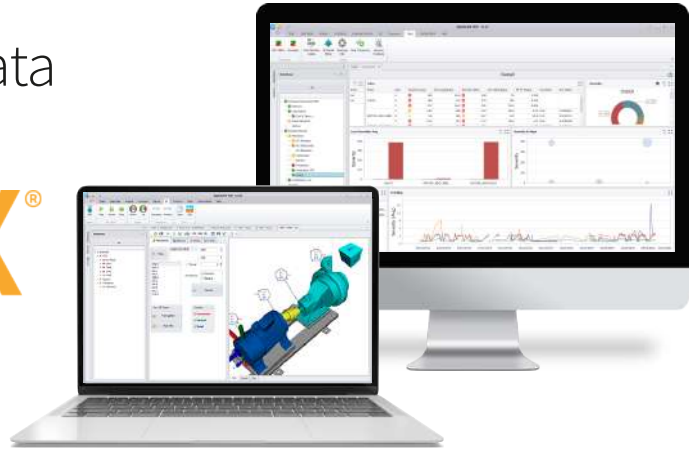
QUICK GUIDE



Our Phantom modules use 2 AAA batteries, making them very easy to change and replace.

Analyze and visualize the data
of your sensors with

DigivibeMX®



Access to your information
in an easy way trough your
browser or DigivibeMX.

You can access special configurations
and update your Phantom sensors
with **Phantom Manager**.



MEET THE PHANTOM FAMILY

Phantom Expert & Phantom Gen 2

High Range triaxial vibration sensor. It is able to send 3 simultaneous FFT and time waveform recordings at once. Available in **High Sensitivity**, **Biaxial** and **ATEX**.



Phantom Termocouple & Phantom Infrared

Have a better control of your machines' temperature. You can connect up to 3 thermocouple sensors or acquire the **infrared** temperature sensor so you can monitor with extreme precision.



Phantom Current

The Phantom current module allows you to measure up to 4 amperage channels with clamps that start with 50 amp and go to 500 amp.



Phantom GP

General Purpose modules that are compatible with any kind of sensor to obtain wireless data. Available for **4-20mA**, **0-10V**, **Digital Signals** and **2.2Vpp** sensors.



Phantom All in One

Obtain the reliability of three sensors in only one Phantom module; vibration, temperature and current. Complete condition monitoring all in one.



Phantom RPM

With the RPM sensor you can easily analyze the revolutions per minute of any rotor, turbine or vent with incredible precision with a switching speed of 600kRPM.



ERBESSD INSTRUMENTS®

WORLDWIDE toll-free:

+1-877-223-4606

ENGLISH:

Sales, Service & Support Engineer

+1-518-874-2700

info@erbessdreliability.com

SPANISH & FRENCH:

Sales, Service & Support Engineer

+52 (55) 6280-7654

info@erbessd-instruments.com

BUY ONLINE

www.erbessd-instruments.com

ALL THE IMAGES ARE FOR ILLUSTRATIVE PURPOSES ONLY. THE FINAL PRODUCT MAY VARY DEPENDING ON THE VERSION AND/OR THE CHANGES OR UPGRADES MADE TO THE PARTS AND COMPONENTS OF THE DEVICES

© 2018 ERBESSD INSTRUMENTS

PHRPM-QG2020.1105.10